

Issued for Permit
08.05.2016

Hampton Inn & Suites

Stanton Hospitality LLC

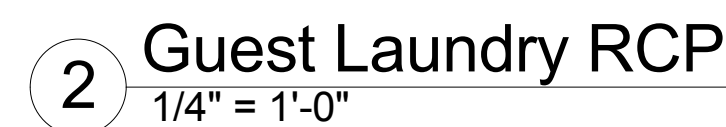
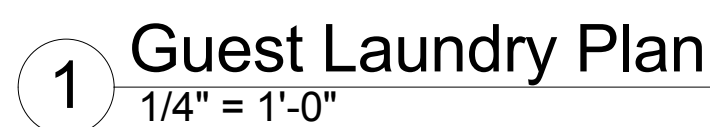
52 Blueberry Lane,
Grove City, PA 16127

THESE DRAWINGS ARE FOR REVIEW OF DESIGN AND SCOPE DESCRIPTION ONLY. NO REPRESENTATION IS MADE TO THE ACCURACY OF THE DRAWINGS WITH REGARD TO EXISTING DIMENSIONS OR CONDITIONS. ALL CONSULTANTS AND CONTRACTORS MUST VERIFY ANY AND ALL DIMENSIONS AND CONDITIONS WHICH ARE CRITICAL TO THEIR WORK. THESE DRAWINGS ARE INSTRUMENTS OF SERVICE AND ARE THE INTELLECTUAL PROPERTY OF JMAC ARCHITECTS. ANY UNAUTHORIZED USE OR REPRODUCTION IS PROHIBITED.

Enlarged Guest Laundry Plan, RCP & Elevations

A-508

A-508



The diagram illustrates the four primary components of a suspended ceiling system, arranged in a 2x2 grid. Each component is shown as a rectangular panel with a grid pattern, representing the standard 24" x 24" size.

- Top Left:** A panel labeled "24\" x 48\" ACOUSTICAL CEILING TILE". It features a grid pattern with a slightly different texture than the other tiles.
- Top Right:** A panel labeled "24\" x 24\" ACOUSTICAL CEILING TILE". It features a grid pattern with a slightly different texture than the other tiles.
- Bottom Left:** A panel labeled "GYPSUM WALL BOARD". It features a grid pattern with a slightly different texture than the other tiles.
- Bottom Right:** A panel labeled "UNDERSIDE OF RATED FLOOR/CEILING". It features a grid pattern with a slightly different texture than the other tiles.